

# CAPABILITIES AND SOLUTIONS



# WHAT WE DO— AN OVERVIEW

## WAREHOUSING

### PUBLIC, CONTRACT & RAIL-SERVED WAREHOUSING SOLUTIONS

With over 5 million square feet of public and contract warehousing across rail-served distribution centers in major markets like Minnesota, Missouri, Iowa, and New York, our solutions extend beyond traditional storage to include extensive outdoor storage capabilities.

Our SQF-certified facilities are designed for safety, efficiency, and compliance, backed by deep expertise in Food & Beverage, Industrial, Medical, and Consumer Goods. We deliver scalable storage solutions with the flexibility and precision to keep your supply chain moving, no matter the product or challenge.

## LOGISTICS

### NATIONWIDE 3PL LOGISTICS PROVIDER & SUPPLY CHAIN SOLUTIONS

Murphy delivers solution-oriented 3PL logistics designed to scale with your business. From contract logistics to complex projects, our customized strategies adapt to customer needs—driven by expert planning, proactive communication, and continuous improvement.

The result is flexible, reliable supply chain management that creates measurable value nationwide.

## TRANSPORTATION

### DEDICATED FLEET, FREIGHT TRANSPORTATION & DISTRIBUTION SERVICES

Murphy's dedicated fleet of 162 trucks powers dependable freight and transportation services across regional routes and nationwide distribution.

We provide the consistency, adaptability, and communication your business demands to keep shipments moving on time.

## CONTRACT PACKAGING & MANUFACTURING

### PACKAGING & MANUFACTURING THAT SCALES WITH YOUR SUPPLY CHAIN

Murphy provides turnkey contract packaging and manufacturing solutions designed to streamline your operations and reduce complexity. From kitting, labeling, case picking, and club store prep to retail-ready packaging, our experienced teams and integrated technology ensure speed, accuracy, and visibility at every step.

Whether you're a global food manufacturer or a leading paper products company, we act as an extension of your business—delivering the flexibility, quality, and trusted partnership you need to meet customer demand and scale for growth.

# WHO WE ARE— HISTORY AND MILESTONES

“

Proudly operating under five generations of Murphy family leadership.



## 1904

### INCEPTION

**Founded** as a drayage business in Saint Paul, Minnesota.

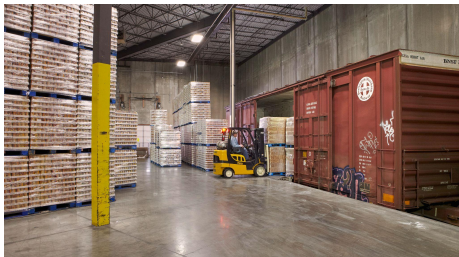
Murphy was started with just two horses and a wagon.



## 1990'S

### EXPANSION

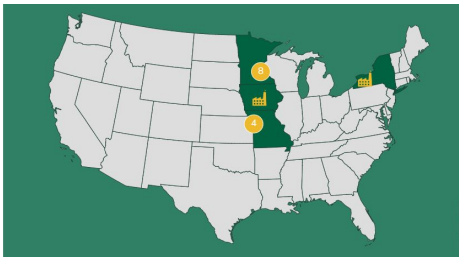
- 1995-98** Constructed three new buildings in Fridley, Minnesota incorporating indoor railway.
- 1997** Partnered with Anheuser-Busch to build a facility in Coon Rapids, also incorporating indoor railway.



## 2010'S

### NEW HORIZONS

- 2012** Expanded into the Kansas City Market with one facility.
- 2016** Opened our largest complex to date in Shakopee Minnesota, at over 1 million square feet.



## 2020'S

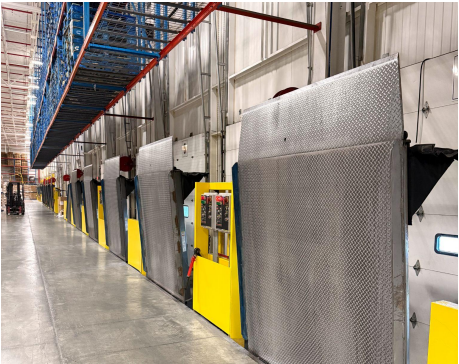
### EVOLUTION

- Board** majority of independent directors
- 2024** Began plant contract operation in Ames, Iowa and Avon, New York for World Leading Food Manufacturer.

# CONTRACT DEDICATED WAREHOUSING— EXPANDING BUSINESSES

## STRATEGIC CONTRACT WAREHOUSING

We're proud to be the trusted partner of a world-leading food manufacturer and one of the top three largest paper companies in the world. For these clients, and many others, Murphy isn't just a warehouse—it's a true extension of their supply chain. We provide dedicated space, personnel, and systems designed to do more than just store inventory. By seamlessly integrating with our manufacturing and packaging services, we focus on reducing risk, keeping costs predictable, and delivering the consistency your customers count on. This turnkey approach ensures your products move efficiently from our production floor directly to your customers, providing the visibility, flexibility, and scalability needed to meet market demand.



**INTEGRATING DIRECTLY WITH  
YOUR SUPPLY CHAIN. WE  
PROVIDE THE CONSISTENCY  
AND FLEXIBILITY YOU NEED TO  
BUILD CUSTOMER TRUST.**

# CONTRACT PACKAGING & MANUFACTURING— WE SCALE WITH YOUR NEEDS

## INTEGRATED CONTRACT PACKAGING

Murphy provides turnkey contract packaging solutions designed to streamline your operations and reduce complexity. From kitting, labeling, case picking, and club store prep to retail-ready packaging, our experienced teams and integrated technology ensure speed, accuracy, and visibility at every step. We handle the intricacies of preparing your products for the market, guaranteeing they are organized, compliant, and ready to meet consumer demand with unmatched precision.

## SEAMLESS CONTRACT MANUFACTURING

Beyond our packaging expertise, we offer turnkey contract manufacturing solutions that provide a complete, end-to-end service. We take your products from the raw materials stage and guide them through a comprehensive production process, seamlessly connecting manufacturing with final-stage packaging. This integrated approach eliminates the need for multiple vendors, further simplifying your supply chain and providing a single point of accountability. By partnering with us, you gain a unified solution that reduces complexity and allows you to focus on your core business.



**A SEAMLESS EXTENSION OF  
YOUR SUPPLY CHAIN,  
ENSURING CONSISTENCY,  
FLEXIBILITY, AND  
CUSTOMER CONFIDENCE.**

# OUR CERTIFICATIONS— A STANDARD OF EXCELLENCE

---

## FOOD GRADE

- SQF, HACCP, USDA + Organic
- MN, WI Boards of Pharmacy
- Ecolab Pest Control

## FDA/USDA

- Murphy Warehouse is FDA/USDA certified in all of our logistics warehouses.

## GOOD MANUFACTURING PRACTICES (GMP)

- Murphy's Good Manufacturing Practices are certified by an inspection and posted throughout all of our logistics campuses in Minnesota and Missouri.

## ORGANIC HANDLER CERTIFICATE

- Minnesota Crop Improvement Association

## FOOD SAFETY AND FOOD SECURITY

- Murphy follows all HACCP policies and procedures throughout all of our facilities nationwide.

## OPERATIONAL / LICENSING

- OSHA-MnSHARP
- Department of Agriculture
- MN Warehouse License
- Motor Carriers License



# MINNEAPOLIS FACILITIES— 3.2 MILLION SQ FT



## CORPORATE HEADQUARTERS

- 345 Plato Blvd E. St. Paul, MN 55107
- 403,325 Sq. Ft.



## EAGAN COMPLEX

- 905 Yankee Doodle Rd. Eagan, MN 55121
- 358,550 Sq. Ft.



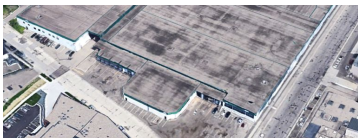
## SHAKOPEE COMPLEX 1

- 901 Canterbury Rd. S. Shakopee, MN 55379
- 1,055,766 Sq. Ft.



## SHAKOPEE COMPLEX 2

- 1080 Park Pl. Shakopee, MN 55379
- 172,400 Sq. Ft.



## HAMPDEN COMPLEX

- 807 N. Hampden Ave. St. Paul, MN 55114
- 112,500 Sq. Ft.



## FRIDLEY COMPLEX 1

- 4700 Main St. NE. Fridley, MN 55421
- 264,000 Sq. Ft.



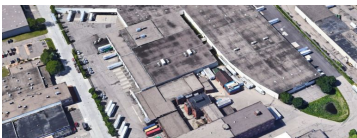
## FRIDLEY COMPLEX 2

- 4850 Main St. NE. Fridley, MN 55421
- 192,000 Sq. Ft.



## NEW HOPE COMPLEX

- 5201 Winnetka Ave. N. New Hope, MN 55428
- 275,600 Sq. Ft.



## MINNEAPOLIS COMPLEX

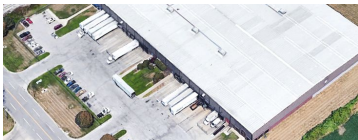
- 701 24th Ave. SE Minneapolis, MN 55414
- 359,000 Sq. Ft.



## CHANHASSEN DEDICATED FOOD-GRADE FACILITY

- 1000 Park Rd. Chanhassen, MN 55317
- 61,488 Sq. Ft.

# KANSAS CITY FACILITIES— 1 MILLION SQ FT



## STILWELL COMPLEX

- 6000 Stilwell St. Kansas City, MO 64120
- 125,000 Sq. Ft.



## EXECUTIVE COMPLEX

- 6600 Executive Dr. Kansas City, MO 64120
- 135,000 Sq. Ft.



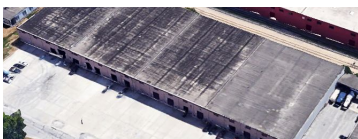
## WARREN COMPLEX

- 1500 Warren St. Kansas City, MO 64116
- 250,000 Sq. Ft.



## FRONT STREET COMPLEX

- 5414 Front St. Kansas City, MO 64120
- 210,000 Sq. Ft.



## TOPPING COMPLEX

- 1650 N Topping Ave. Kansas City, MO 64120
- 313,000 Sq. Ft.





# PROUDLY WOMEN-OWNED

Murphy Logistics is a certified Women's Business Enterprise (WBE), recognized by the Women's Business Enterprise National Council (WBENC). Our certification is a reflection of our dedication to leadership, belief in the strength of diversity, and our work to empower future generations in the logistics industry.



“

We are proud to be majority women owned by the 4th & 5th generation of the Murphy Family.



## CONTACT

Greg Parupsky  
Sales Director  
612-623-1229  
[gparupsky@murphywarehouse.com](mailto:gparupsky@murphywarehouse.com)

# READY TO MOVE YOUR BUSINESS FORWARD?

